

# CAROL OF THE BELLS

5.

Hark how the bells, sweet sil-ver bells, all seem to say, throw cares a-way Christ-mas is here,

5.

Ding, 5.

Detailed description: This system contains the first five measures of the song. It features a vocal line in treble clef with a key signature of one flat and a 3/4 time signature. The lyrics are: "Hark how the bells, sweet sil-ver bells, all seem to say, throw cares a-way Christ-mas is here,". Below the vocal line are two piano accompaniment staves. The first piano staff has rests for the first four measures and a dotted quarter note in the fifth measure. The second piano staff has rests for all five measures. A measure number "5." is placed above the vocal line at the end of the system, and another "5." is placed above the first piano staff at the end of the system. The word "Ding," is written above the second piano staff at the end of the system.

9.

brin - ging good cheer, to young and old, meek and the bold, Oh how they pound,

9.

dong, ding, dong. Oh how they pound,

9.

Detailed description: This system contains measures 6 through 9. The vocal line continues with the lyrics: "brin - ging good cheer, to young and old, meek and the bold, Oh how they pound,". The piano accompaniment includes a circled quarter note in the second measure of the first piano staff and a circled quarter note in the fourth measure of the second piano staff. A handwritten arrow points from the circled note in the second piano staff to the circled note in the first piano staff. Measure numbers "9." are placed above the vocal line at the end of the system and above the first piano staff at the end of the system. The word "Oh" is written above the second piano staff at the end of the system.

13.

rai - sing the sound, o'er hill and dale, te - lling their tale, Ga - lly they ring,

13.

rai - sing the sound, o'er hill and dale te - lling their tale. Ga - lly they ring,

13.

how they pound. Gai - ly

Detailed description: This system contains measures 10 through 13. The vocal line continues with the lyrics: "rai - sing the sound, o'er hill and dale, te - lling their tale, Ga - lly they ring,". The piano accompaniment features a circled quarter note in the fourth measure of the first piano staff. Measure numbers "13." are placed above the vocal line at the end of the system and above the first piano staff at the end of the system. The lyrics "how they pound. Gai - ly" are written below the piano accompaniment at the end of the system.

17.



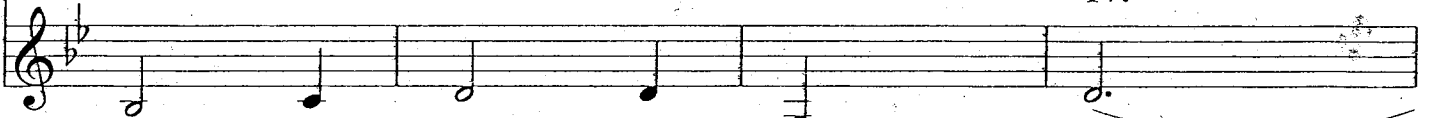
while peo-ple sing song of good cheer, Christ-mas is here,

17.



while peo-ple sing song of good cheer, is here. Mer-ry mer-ry mer-ry

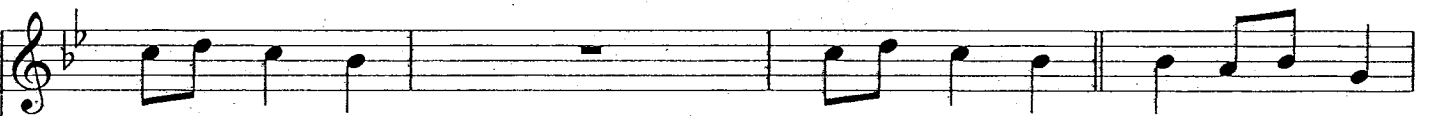
17.



they ring good cheer here.

Ding

21.



me-rry Christ-mas, me-rry Christ-mas. On on they send,

21.



Christ - mas, mer-ry mer-ry mer-ry Christ - mas.

21.



ding.

Oh

25.



on with-out end, their joy-ful tone to e-very home. Hark how the bells, sweet sil-ver bells,

25.



Their home

dong.  
25.



on their home,

dong.

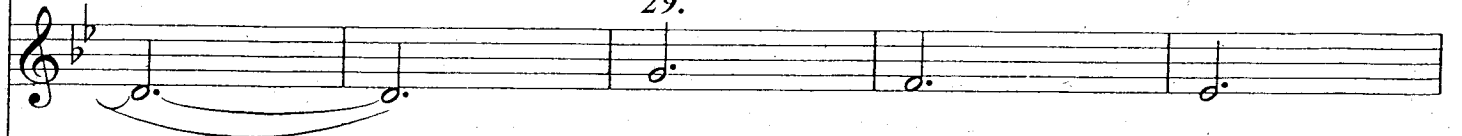
29.

11



all seem to say, throw cares a-way Christ-mas is here, brin-ging good cheer, to young and old,

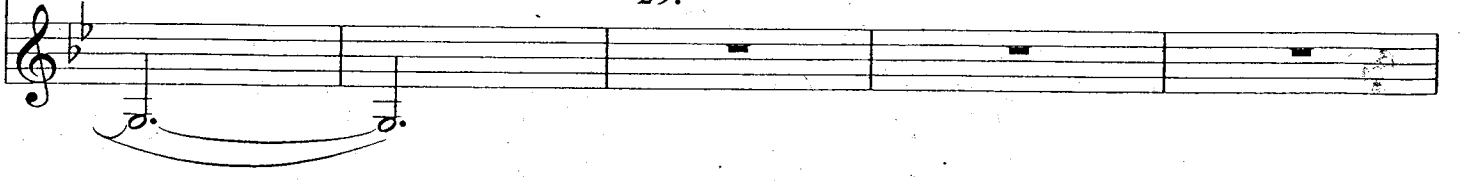
29.



Ding  
29.

ding

dong

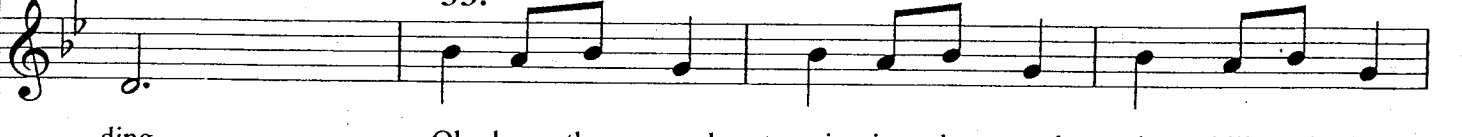


33.



mee-k and the bold, Oh how they pound, rai - sing the sound, o'er hill and dale,

33.



ding.

Oh how they pound, rai - sing the sound, o'er hill and dale

33.



Ó

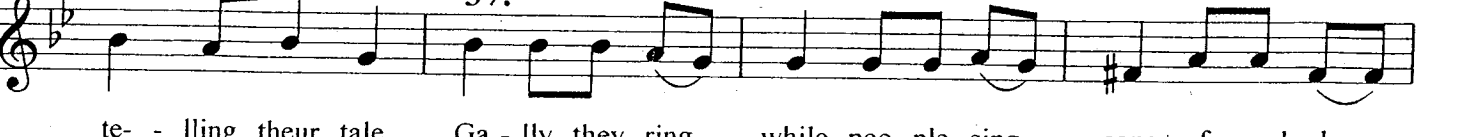
how they

37.



te - lling their tale, Ga - lly they ring, while peo - ple sing song of good cheer,

37.



te - lling their tale. Ga - lly they ring, while peo - ple sing song of good cheer

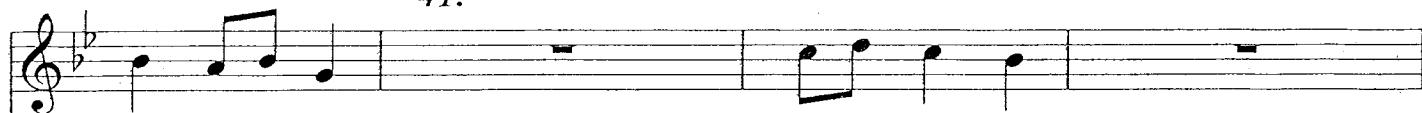
37.



pound.

Gai - ly they ring good cheer

41.



Christ-mas is here,

me-rry Christ-mas,

41.

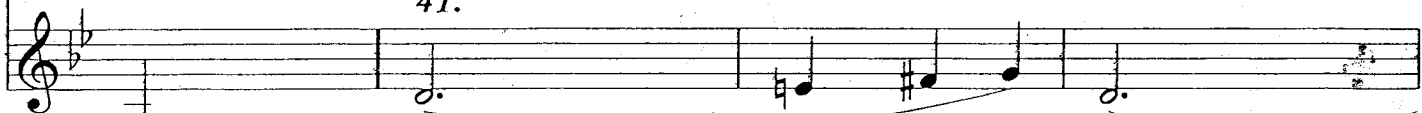


is here.

Mer-ry mer-ry mer-ry Christ

mas, mer-ry mer-ry mer-ry

41.



here.

Ding

ding.

45.



me-rry Cgrist-mas. On on they send, on with-out end, their joy-ful tone to eve-ry home.

45.

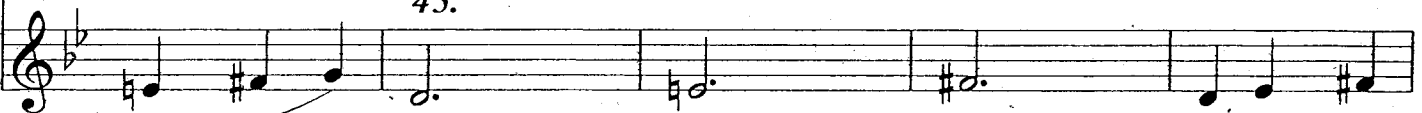


Christ - mas.

On on

their joy-ful tone to eve-ry home.

45.



On

on

tone

eve - ry home



Ding din-gy ding dong!



Ding din-gy ding dong!



ding dn-gy ding dong!